



## A quantitative analysis of student's satisfaction

Hayder Ghazi Karam Ali Alwattar \*, University of Worcester, Department of Computing, Henwick Grove, WR2 6AJ, United Kingdom

### Suggested Citation:

Alwattar, H. G. K. A. (2022). A quantitative analysis of student's satisfaction. *International Journal of Innovative Research in Education* 9(1), 19-34. <https://doi.org/10.18844/ijire.v9i1.7765>

Received from February 25, 2022; revised from April 13, 2022; accepted from June 22, 2022.

Selection and peer-review under the responsibility of Assoc. Prof. Dr. Zehra Ozcinar, Ataturk Teacher Training Academy, Cyprus

©2022 Birlesik Dunya Yenilik Arastırma ve Yayıncılık Merkezi, Lefkosa, Cyprus.

### Abstract

The goal of this study is to scale the level of students' satisfaction by services provided by Girne American University located in the North Cyprus region, mainly focused on the education quality along with other services provided by the university. Quantitative research was conducted to measure the students' satisfaction. A questionnaire sample was distributed to more than 50 students. However, only 50 usable samples were used in the study. The questionnaire was based mainly on four aspects: general aspects of Girne American University, educational resources, instructors and advisors, and teaching methods. The analysis is made over the four main aspects stated above. Students' opinions about services provided by the university were somewhat convergent. Results showed that students are greatly satisfied with the quality level of education and not satisfied with the general services provided by Girne American University. The University may use the surveys' outcomes to work on enhancing services that didn't meet students' expectations.

**Keywords:** Education; satisfaction; student; quality.

---

\* ADDRESS FOR CORRESPONDENCE: Hayder Ghazi Karam Ali Alwattar, University of Worcester, Department of Computing, Henwick Grove, WR2 6AJ, United Kingdom  
E-mail address: [haider\\_gk@yahoo.com](mailto:haider_gk@yahoo.com)

## 1. Introduction

Student satisfaction surveys are a common method for analyzing the general level of satisfaction of the students in schools (Abbasi, 2011; Santini, 2017). It aims to provide an overview of thoughts of students towards the different services of schools including education quality, food services availability and quality, transportation, and dormitory services provided. Data obtained from survey results are analyzed to obtain statistical data that will provide a clear picture of the image of the school in students' eyes (Vichet, 2010; Bawaisa, 2020).

Several studies have discussed the effect of service quality on student satisfaction in higher education. Kotler and Keller (2009, p. 789), define service as, "any intangible act or performance that one party offers to any other that does not result in the ownership of anything." On the other hand, Zeithaml and Bitner (2003) mentioned that "Service quality is a focused evaluation that reflects the customer's perception of specific dimensions of service namely reliability, responsiveness, assurance, empathy, tangibles." These five dimensions are defined to measure the quality of service based on the customer's expectation of service provided. This led to the development of SERVQUAL, a method used to measure service quality using the five dimensions mentioned above (Monica, 2018; Wilson, 2018).

A study conducted using a quantitative approach at Kristianstad University examined the relationship between service quality and students' satisfaction. The study showed that service quality affected Students' satisfaction slightly, even with some negative aspects of services provided by the university, students were satisfied (Keblawi, Johansson, and Svensson, 2013). On the other hand, another study conducted at the University of Malaysia showed that service quality plays a major role in students' satisfaction. Three service quality dimensions were examined against students' satisfaction (Responsiveness, assurance, and empathy). The outcome of this study shows that good services provided by the university result in a higher level of student satisfaction (Wei and Ramalu, 2011).

A study conducted by Gakhal et al. (2017), compares the level of UK and non-UK students' satisfaction at a UK University. Several modules were examined to find out the relationship between students' satisfaction with the overall learning experience and residency. Results show a noticeable relationship between students' satisfaction and residency which could be attributable to other factors such as class size. Another study conducted at a European university focuses on the evaluation of different services provided by the university to measure students' satisfaction and their learning outcomes. International and national students participated in the study, results demonstrated that students observe activities outside the classroom as a good opportunity to develop their skills and knowledge toward becoming globally professional individuals (Herdlein and Zurner, 2015).

### 1.1. Purpose of study

The goal of this study is to scale the level of students' satisfaction by services provided by Girne American University located in the North Cyprus region, mainly focused on the education quality along with other services provided by the university. Based on the literature review discussed above, several hypotheses are produced to determine the links between students' satisfaction and service quality at Girne American University.

H1- The quality of Instructors in GAU is generally good.

H2- Educational Resources such as labs, library sources, and internet connection availability in GAU are not satisfactory.

H3 -The quality of education provided in GAU is above average.

## **2. Materials and Methods**

The quantitative research methodology was used in this study to measure the level of student satisfaction in terms of the education quality aspect of GAU to obtain results that can be used by higher education institutions (Johnson & Christensen, 2004). The quantitative method allows for the measurement of many subjects' reactions to a set of questions. Because each question has a limited set of answers, the results can be compared and analyzed statistically, they also can be generalized to a larger population within known limits of error (Johnson & Christensen, 2004).

### **2.1. Participants**

This study was carried out at Girne American University in Northern Cyprus region by students who participated in a survey that measures their satisfaction with GAU services. Students are considered a customer who seeks a good educational program that will lead to a better and more successful career after graduation. The data of this study were collected during the students' break time by a sample questionnaire distributed to 130 students from different faculties at GAU. Only 50 usable samples of the questionnaire were used. The survey questions focused on the education quality aspect of GAU. Other questions are asked to find out about the student satisfaction with other facilities such as sports, security, transportation, and internet connection availability.

### **2.2. Data collection instrument**

We conduct research by using a student satisfaction survey including some essential questions to obtain students' thoughts about various aspects of the university. Our research mainly focuses on the education quality aspect of GAU. We prepared the survey to receive students' opinions about the education services provided by the university such as the quality of lectures, instructors, laboratory material, and course material.

The survey is distributed to students during their break time between lectures. As a challenge, it was difficult to control the distribution and collecting of the questionnaire samples. Some students didn't accept filling out the sample due to different circumstances. Some surveys were filled in an inappropriate form which we had to consider unusable surveys that had to be discarded. The questionnaire consists of 15 questions that covered the main aspects affecting the level of students' satisfaction. While education quality was the main focus, some questions are asked to find out about the student satisfaction with other facilities provided by GAU such as sports, security, transportation, and internet connection availability.

Obtained results showed that the majority of the students are generally satisfied with the level of education, highly satisfied with their instructors, and strongly unsatisfied with the general facilities of GAU such as sports, security, food services, and internet connection availability around the university.

### **2.3. Analysis**

Collected raw data is transferred into Microsoft Excel as a spreadsheet and analyzed there by using various methodologies. The Scoring system, we have used for the 4 possible responses in the main section of the survey range between 0-3 where "Strongly Disagree" represents 0, and "Strongly Agree" represents 3. The reason that we have used a scoring system between 0-3 is to simplify the calculation of results by limiting possible score outcomes of each question between 0 and 150 considering a total of 50 participants. A total score of each question in the range of 0-150 is calculated and then converted into a standard scoring system over 100.

Some statistic calculation values such as mean, median, mode, and standard deviation are used separately for scores of each question. Besides these values, some different analysis methods called "Percent Agree" will be used for analyzing raw results. This method takes only two possible positive responses into account and compares them to the total number of responses made for each question. It is possible to use the "Percent Agree" method in 2 ways. The first one is the "Top-Box" method where only the "Strongly Agree" option is considered a positive response but, in our case, we have chosen to use the second method which is the "Top-two boxes" method where both the positive answers which are "Agree" and "Strongly Agree" are counted. Column charts are used to illustrate the total scoring over 100 points, percentage of agree, and frequency of answers given for each question.

#### **2.4.Procedure**

Survey design consists of two types, the longitudinal design, in which data are collected on a sample at different points of time, and a cross-sectional design, in which data are collected at a single point of time (Creswell & David Creswell, 2009). In this study, a cross-sectional design is used to measure the level of student satisfaction with the services provided by GAU mainly focusing on the education quality aspect (Creswell & David Creswell, 2009). In this study, two concerns are taken into account to help build this survey, the first concern is the data collection "units" to be used in this survey and the second one is the technique type to collect these data. In this survey, the used units are the population of GAU students collected using the questionnaire technique.

The main aim of the survey is to obtain students' satisfaction measures for their general education experience at GAU. The survey is made up of 2 parts. First, is the main part of the survey which contains 15 questions that will be evaluated for statistical analysis? The second part is prepared for testing the accuracy of the data obtained from students and provides a more general overview of students' satisfaction with different GAU facilities. We have also asked an essay question in the second part where students can provide us with information about their main reason for selecting GAU.

The main part of the survey contains questions that focus on the quality of the education and uses a 4-point scaling system with the response options given as; "Strongly Disagree", "Disagree", "Agree" and "Strongly Agree". We have decided to use a 4-point scaling system and avoided using the common response option that is included in 5-point scaling systems which is "Neither agree nor disagree". This ensures that we get the absolute opinions of students and remove indecisiveness from our survey. The main part of the survey can be categorized into 4 main groups. These categories and questions that fall into each of these categories are explained below:

##### **1. General Aspects of GAU.**

- A. Tuition fees are reasonable.
- B. General quality of teaching is good.
- C. Education in my department is preparing me for the career I desire.
- D. I am satisfied with the general facilities of my university such as sports, security, transportation, and food services.

##### **2. Educational Resources.**

- A. Laboratories, computers, and other teaching equipment are appropriate for a good quality of teaching.
- B. Internet connection is available around the whole campus.

- C. Library resources such as books and journals are sufficient.
- D. Lecture notes, books and other teaching material are appropriate and up to date.
- 3. Instructors and Advisors.
  - A. My instructors are accessible during their office hours.
  - B. Attitudes of my instructors are friendly and helpful toward me.
  - C. My academic advisor can provide good guidance for me.
- 4. Teaching Methods.
  - A. Teaching methods aim to improve analytical thinking abilities
  - B. My education program includes adequate courses for the area of study.
  - C. Assignments and projects are utilizing the skills that I have obtained during my education.
  - D. Content of courses in my department is valuable and up to date.

The questions are aligned in a mixed order in the survey, each question and its related response options are written down in both English and Turkish for providing easier understanding for local and international students.

The second part of the survey provides us with an overview of the general perspective of students towards GAU as a whole. Two main questions in this section are designed to evaluate students' satisfaction with the general facilities of GAU as a university and to obtain students' opinions about facilities that are evaluated under 4 main categories (Zineldin, 2011; Mihanovic, 2016). These categories are given below:

- 1. Education
- 2. Transportation
- 3. Dormitories
- 4. Other Facilities (sports, healthcare, library, security, etc...)

Multiple answers to these 2 questions are allowed and will be evaluated in our analysis for accuracy measure purposes. We have also included an essay question regarding the main reason why students choose to study at GAU. The answers in the second section will not be included in the statistical results. However, they will be used for estimating the accuracy of the student's answers in the first part of the survey and provide students better freedom to comment on his /her student experience in GAU.

### **3. Results**

The Main table below keeps the collected raw data from survey responses for each question in every column separately. The numbers between 0-3 indicate the score that has been given by the student participants. Survey papers have been numbered and aligned in an order to provide easier traceability. At the end of the table, the statistical calculation values are added for each question. The table below is the main table that contains the raw data and its statistical calculations for each question

**Table1**

*Main Table Regarding Raw Responses and Statistical Calculations*

Paper#	Q1	Q2	Q3	Q4	Q5	Q6	Q7	Q8	Q9	Q10	Q11	Q12	Q13	Q14	Q15
1	2	2	1	2	0	1	2	1	2	1	0	1	2	1	2
2	0	0	2	1	1	2	2	2	1	0	0	2	2	2	0
3	2	2	2	1	0	1	2	2	3	2	3	1	1	2	1
4	2	2	1	3	0	0	2	2	2	2	0	2	2	1	1
5	2	2	2	1	0	2	3	2	2	1	1	2	2	1	1
6	2	2	0	2	0	1	3	2	0	2	2	2	1	2	2
7	2	1	0	3	0	3	1	2	3	2	2	2	1	1	2
8	2	1	0	2	0	1	3	3	3	3	2	1	2	1	1
9	1	0	0	1	0	2	3	3	1	1	0	2	2	1	0
10	1	2	1	2	1	3	3	2	2	3	2	3	1	2	0
11	1	2	1	2	0	0	2	1	2	2	1	2	2	1	0
12	2	1	2	1	1	2	3	2	3	2	2	2	2	2	2
13	2	1	1	2	3	3	1	3	3	3	2	2	2	1	1
14	2	2	2	2	0	2	2	1	2	2	2	1	1	1	2
15	2	1	1	2	2	2	1	2	2	2	2	2	1	2	1
16	2	2	1	2	0	0	2	2	2	2	1	2	1	0	0
17	1	1	1	1	0	0	0	2	2	2	1	2	1	1	0
18	2	3	2	2	1	2	3	3	3	2	2	2	2	3	2
19	1	2	2	2	2	1	3	3	3	2	2	2	2	2	0
20	1	0	2	1	2	1	2	0	1	1	2	1	1	2	0
21	0	2	2	2	1	2	2	2	2	2	2	2	2	1	1
22	1	0	2	2	0	2	3	3	2	2	1	2	2	2	0
23	1	2	2	2	0	2	2	2	2	2	2	2	1	2	0
24	1	2	0	2	0	2	3	2	3	3	2	2	2	2	1
25	2	1	2	2	0	2	1	2	2	1	1	1	1	1	1
26	2	2	2	2	1	1	2	2	3	2	2	2	3	2	3
27	0	2	2	2	2	0	3	3	2	2	1	1	2	2	0
28	2	2	3	2	1	2	3	3	2	2	2	2	2	3	2
29	3	1	1	2	2	1	1	1	1	2	2	2	1	1	3
30	0	2	0	2	1	1	3	2	2	2	2	1	1	2	0
Paper#	Q1	Q2	Q3	Q4	Q5	Q6	Q7	Q8	Q9	Q10	Q11	Q12	Q13	Q14	Q15
31	1	2	1	2	0	0	2	2	3	2	1	2	0	2	0
32	2	2	2	2	1	1	2	2	2	2	2	2	2	2	1
33	2	2	1	0	1	2	1	1	3	0	3	2	0	1	3
34	2	2	1	2	0	1	2	3	2	2	1	2	2	1	0
35	1	1	1	1	0	2	3	2	0	1	0	0	0	1	3
36	2	1	1	1	0	1	2	1	1	2	1	2	1	1	0
37	2	0	0	3	0	0	2	1	0	2	0	1	1	1	2
38	0	2	3	3	2	2	1	1	0	2	0	1	1	1	2
39	3	2	0	0	0	2	3	3	3	1	2	2	2	1	3
40	3	1	2	0	1	1	0	2	0	1	2	2	1	2	2

41	2	1	2	2	0	1	1	2	3	2	2	0	2	2	1
42	1	2	0	2	0	0	2	3	2	1	0	1	1	0	0
43	2	2	0	0	1	2	3	2	1	2	2	2	1	2	1
44	2	2	1	2	1	0	3	2	2	2	2	2	1	2	0
45	2	0	0	0	0	1	1	0	0	1	0	1	1	0	0
46	2	1	2	2	0	1	1	0	1	1	1	1	0	2	1
47	2	2	2	2	0	2	3	2	0	2	2	2	2	2	1
48	2	2	1	2	0	2	1	1	2	2	2	2	1	2	0
49	2	1	2	2	0	2	2	2	3	2	2	2	2	1	2
50	1	2	1	2	0	2	2	2	2	2	1	2	2	1	0
Totals:	80	75	63	85	28	69	103	96	93	89	72	84	71	74	51
Mean:	1.6	1.5	1.26	1.7	0.56	1.38	2.06	1.92	1.86	1.78	1.44	1.68	1.42	1.48	1.02
Median:	2	2	1	2	0	1.5	2	2	2	2	2	2	1	1.5	1
Mode:	2	2	2	2	0	2	2	2	2	2	2	2	2	2	0
Std. Dev.:	0.748	0.728	0.844	0.755	0.779	0.846	0.858	0.796	0.98	0.642	0.828	0.581	0.666	0.671	1.01

Totals stated at the bottom of “Table1” is the total number of points received from participants for each question and it is considered to be a score over 150. Scoring for each question over 100 will be displayed as a different table and column chart in the following pages of this section. After converting the total scores over 150 points into a 100-point scoring system we have obtained the table below.

**Table 2**

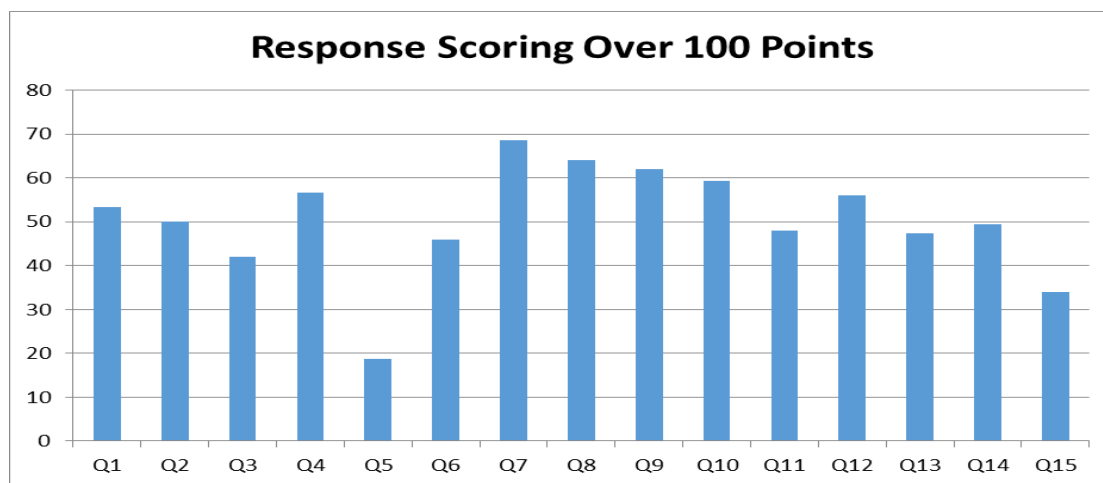
*Response Scoring over 100 Points.*

	Q1	Q2	Q3	Q4	Q5	Q6	Q7	Q8	Q9	Q10	Q11	Q12	Q13	Q14	Q15
Scores Over 100	53.33	50	42	56.67	18.67	46	68.67	64	62	59.33	48	56	47.33	49.33	34

What we observe from this table 2 is that the lowest score is received in question number 5 by 18.67. This question was related to the availability of internet connections around the campus. This means that students are not satisfied at all with the availability of the internet on the GAU campus. This finding supports Hypotheses (H2). The highest scores are received for questions 7, 8, 9, and 10. Questions 7, 8, and 9 falls into the “Satisfaction of Instructors and Advisors” category. These results tell us that the students are mostly satisfied with their instructors and advisors in GAU which supports hypotheses (H1). Question number 10 states that the courses included in the students' education programs are adequate for the area of study. So, it is possible to say that the students are satisfied with the courses included in their departments. This result supports hypotheses (H3). The second lowest response score is received for question 15 which states that the general facilities of the school such as sports, security, transportation, and food are satisfactory. Below is a column chart presentation of these results obtained in “Table 2”.

**Figure 1**

*Column Chart for Response Scoring Over 100 Points.*



The percent Agree on method yields better results for the student responses by only considering the number of two possible positive responses which are “Agree” and “Strongly Agree”. Normally the obtained result from this method yields values compared to the total number of responses to a question or possibly to say the total number of participants which is 50 in our research. However, the numbers shown in table 3 are converted into a scoring system over 100 points by simply multiplying the resulting scores by 2.

**Table 3**

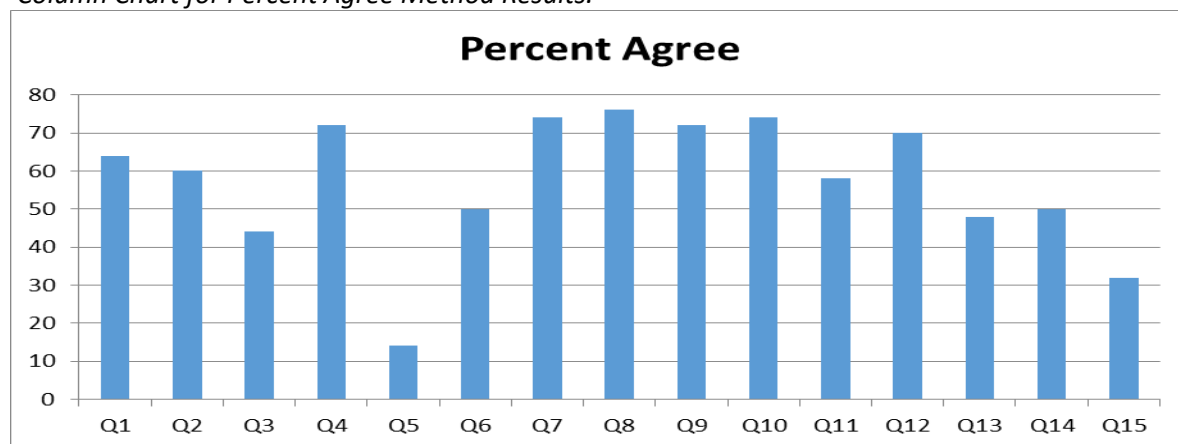
*Percent Agree on Method Results for the Responses.*

	Q1	Q2	Q3	Q4	Q5	Q6	Q7	Q8	Q9	Q10	Q11	Q12	Q13	Q14	Q15
Percent Agree	64	60	44	72	14	50	74	76	72	74	58	70	48	50	32

When we look at this table, we see that the pattern is almost the same as “Table 2” However, there is a sharper difference between the question that received low scores and the questions that received high scores. This method is more useful as means of evaluating the negative and positive opinions of students about the related facilities of the GAU. If we want to consider an absolute scoring system for our research, we should choose results we have obtained from the “Percent Agree” method. The column chart presentation of “Table 3” is shown below.



**Figure 4**  
*Column Chart for Percent Agree Method Results.*



The last method used for analyzing the obtained data was preparing a response frequency table. This is where various observations for each question can be handled in much more detail. Below is the response frequency table that shows the sum of response options selected for each question by the students.

**Table 4**  
*Response Frequency Table.*

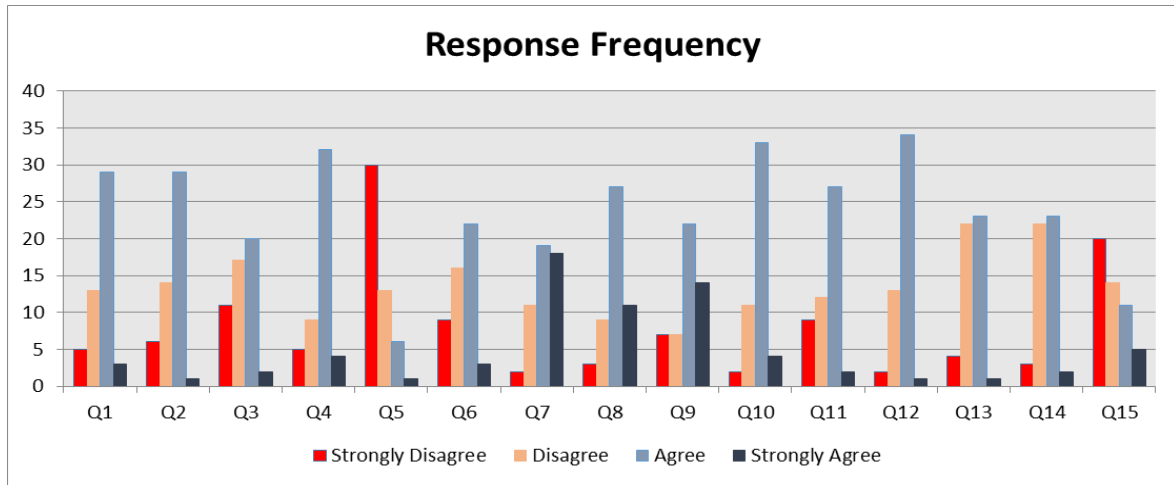
	Strongly Disagree	Disagree	Agree	Strongly Agree
Q1	5	13	29	3
Q2	6	14	29	1
Q3	11	17	20	2
Q4	5	9	32	4
Q5	30	13	6	1
Q6	9	16	22	3
Q7	2	11	19	18
Q8	3	9	27	11
Q9	7	7	22	14
Q10	2	11	33	4
Q11	9	12	27	2
Q12	2	13	34	1
Q13	4	22	23	1
Q14	3	22	23	2
Q15	20	14	11	5

By looking at the table above it is easy to see the questions that received answers at the most positive edge represented by “Strongly Agree”, and the negative edge which is “Strongly Disagree”. These options are mostly selected by the participants who are either very certain about their answers to related questions or participants who are in high need of expressing their thoughts as positive or negative reactions. Most students tend to simply select the response options that are not on one of the edges as we have observed while checking the surveys. But some questions have received “Strongly Agree” or “Strongly Disagree” from most students regardless of the student’s general pattern of answering the survey. This tells us that there is a common view about certain aspects of GAU that have been observed by the students.

We have considered a limit of 10 for each question that might receive a response on either one of the edges. By looking at this table we can see those questions 3, 5, and 15 are the ones that are over the negative limit of the responses received. Questions 7, 8, and 9 received more than 10 positive edge responses. These results are not very different from the ones we have obtained from previous analyses. However, this shows us clearly the strong reactions received from students to certain questions. If this research should provide an overview of the strong and weak aspects of the university, then the response frequency table should have the highest priority before other analysis results. The column chart below represents the response frequency table in a graphical format.

**Figure 5**

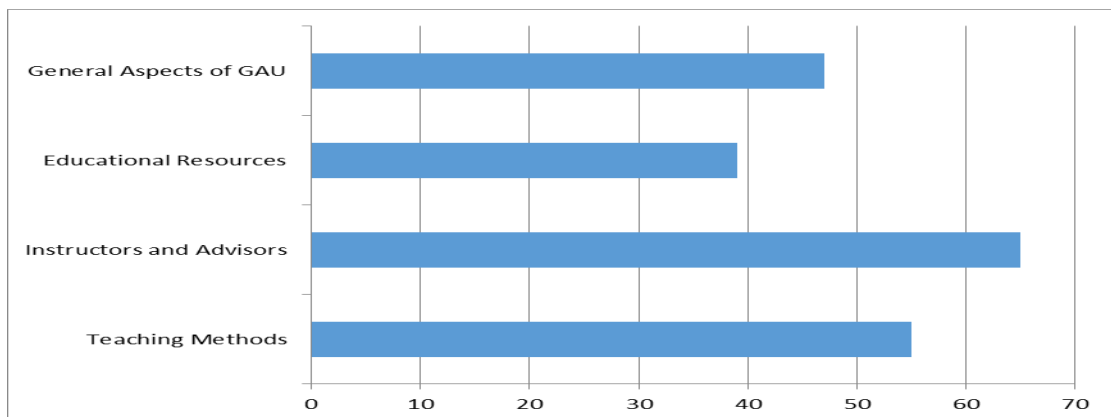
*Response Frequency Chart.*



For summing up our survey analysis we have prepared another chart for measuring the performance of 4 main categories of aspects related to GAU as described in the “Survey Design” section above. These results are obtained by finding a mean number for the “Response Scoring over 100 Points” for the questions that fall into a different category between these 4 main categories. The bar chart below illustrates the performance of each category separately.

**Figure 6**

*Performance analysis chart*



#### 4. Discussion

This study has shown that students are generally very satisfied with the quality and attitudes of their instructors and advisors. However, it is not possible to say that students are satisfied with the general aspects of GAU including some general facilities such as sports, healthcare, security, and transportation according to this research. These are however very important in a university environment (Murphy et al., 2018).

Responses received for the overall education quality of GAU show that students are fairly satisfied with the education quality provided by GAU. The obtained results clearly state that majority of students are satisfied by the price/quality ratio of the education they are receiving. But lack of educational resources such as internet connection availability, laboratories, computers, library sources, and other material related to education is at an unsatisfactory level according to students who are studying at GAU. These are resources that are essential for learning (Bol, 2020).

#### 5. Conclusion

The goal of this study is to scale the level of students' satisfaction by services provided by Girne American University located in the North Cyprus region, mainly focused on the education quality along with other services provided by the university. Results showed that students are greatly satisfied with a quality level of education and not satisfied with the general services provided by Girne American University.

There are limitations to this study. First, the study was conducted at one university in the North Cyprus region which may not be linked to related studies in higher education institutions in that region. However, the results obtained from the study give useful information about students' satisfaction in higher education which may be used to carry out a comparison study among multiple higher education institutions in that region.

Second, we have conducted this research under given limitations on participants and the number of questions included in the questionnaire. The number of usable samples is limited by 50 participants and the limited number of questions that could be asked in this research project. A large number of participants may be included in future research to examine students' satisfaction in multiple departments.

#### References

- Abbasi, M., Malik, A., Chaudhry, I. & Imdadullah, M, (2011). A Study on Student Satisfaction in Pakistani Universities: The Case of Bahauddin Zakariya University, Pakistan. *Asian Social Science*, 7(7).  
<https://pdfs.semanticscholar.org/6532/908071221a07ed35f2cdba8d12e3df6f0573.pdf>
- Bawaisa, J., Sagsanb, M. & Ertuganc, A. (2020). The Impact of Service Quality on Student and Academic Staff Satisfaction within Higher Education Institutions: A Case Study of Sulaimani City in Northern Iraq. *Revista Argentina de Clínica Psicológica*, 29(5), p. 440.

- <https://www.revistaclinicapsicologica.com/data-cms/articles/20201030093806amSSCI-286.pdf>
- Bol, T. (2020). Inequality in homeschooling during the Corona crisis in the Netherlands. First results from the LISS Panel. <https://osf.io/preprints/socarxiv/hf32q/>
- Creswell, J. and David Creswell, J., (2009). *Research Design: Qualitative, Quantitative, and Mixed Methods Approach*. 3 ed. California: Sage. [https://www.ucg.ac.me/skladiste/blog\\_609332/objava\\_105202/fajlovi/Creswell.pdf](https://www.ucg.ac.me/skladiste/blog_609332/objava_105202/fajlovi/Creswell.pdf)
- Gakhal, S., Wilson, C., Broughan, C. & Sparks, T., (2017). Evaluating student satisfaction at a top-performing UK university. *Student Engagement in Higher Education Journal*, 1(2), pp. 54-70. <https://195.201.33.159/raise/article/view/gakhal>
- Herdlein, R. & Zurner, E., (2015). Student Satisfaction, Needs, and Learning Outcomes: A Case Study Approach at a European University. *Sage open*, 5(2). <https://journals.sagepub.com/doi/abs/10.1177/2158244015580373>
- Johnson, B., & Chritensen, B. J. (2004). *Educational Research: Quantitative, Qualitative, and Mixed Approaches*, Research Edition. *South Carolina: Allyn & Bacon*. [https://ismailsunny.files.wordpress.com/2017/07/educational-research\\_-quantitat-r-robert-burke-johnson.pdf](https://ismailsunny.files.wordpress.com/2017/07/educational-research_-quantitat-r-robert-burke-johnson.pdf)
- Keblawi, A., Johansson, I. & Svensson, D. (2013). Student satisfaction in a higher education context, s.l.: HKR. <https://un-pub.eu/ojs/index.php/IJIRE/article/view/6540>
- Kotler, P. & Keller, K. (2016). *Marketing management*. 15 ed. s.l.: Pearson.
- Mihanovic, Z., Batinic, A. & Pavicic, J. (2016). The link between students' satisfaction with faculty, overall students' satisfaction with student life, and student performance. *Review of Innovation and Competitiveness*, 2(1), pp. 37-60. <https://hrcak.srce.hr/clanak/229568>
- Monica, M. & Ramanaiah, G. (2018). Service Quality Measurement at Brand Factory: An Empirical Study. *Management and labor studies.*, 43(1-2), pp. 70-77. <https://journals.sagepub.com/doi/abs/10.1177/0258042x17749650>
- Murphy, M. H., Carlin, A., Woods, C., Nevill, A., MacDonncha, C., Ferguson, K., & Murphy, N. (2018). Active students are healthier and happier than their inactive peers: the results of a large representative cross-sectional study of university students in Ireland. *Journal of physical activity and health*, 15(10), 737-746. <https://journals.humankinetics.com/view/journals/jpah/15/10/article-p737.xml>
- Santini, F. D. O., Ladeira, W. J., Sampaio, C. H., & da Silva Costa, G. (2017). Student satisfaction in higher education: A meta-analytic study. *Journal of Marketing for Higher Education*, 27(1), 1-18. <https://www.tandfonline.com/doi/abs/10.1080/08841241.2017.1311980>
- Vichet, S., McCaskey, S. & Catherine, K. (2010). A survey research of satisfaction levels of graduate students enrolled in a nationally ranked top-10 program at a mid-western university. *Research in Higher Education Journal*, 7(2), pp. 5-14. <http://www.vichetsum.com/09403.pdf>
- Wei, C. & Ramalu, S. (2011). Students Satisfaction towards the University: Does Service Quality Matters? *International Journal of Education*, 3(2). <https://repo.uum.edu.my/id/eprint/9541/>

Wilson, A., Zeithaml, V. A., Bitner, M. J. and Gremler, D., 2018. *Services Marketing: Integrating Customer Focus Across the Firm*. 7 ed. s.l.: McGraw-Hill Education.

Zineldin, M., Akdag, H. and Vasicheva, V., 2011. Assessing quality in higher education: new criteria for evaluating students' satisfaction. *Quality in Higher Education*, 17(2), pp. 231-243. <https://www.tandfonline.com/doi/abs/10.1080/13538322.2011.582796>

## Appendices

### Appendix A. One copy of the prepared questionnaire.

#### Education

- 1- Are the prices of courses (education) reasonable?
- 2- Is the level (quality) of teaching satisfactory in general?
- 3- Are the laboratories and other teaching equipment such as (projectors, computers, whiteboards, etc..) sufficient?

#### Transportation

- 1- Is frequency of the busses satisfactory
- 2- Are you satisfied with the coverage of the bus routes?
- 3- Are the busses comfortable for u? (In terms of seats heating etc.)

#### Dormitory

- 1- Are you satisfied with the prices of the dormitories?
- 2- Is the cleaning schedule satisfactory for you?
- 3- How satisfied are you with the general quality and availability of the food on a university campus? (Cafeterias, restaurants)

#### Facilities

- 1- Are you satisfied with the healthcare center's services?
- 2- Is the internet connection available around the whole university campus?
- 3- Are the library sources sufficient? Such as books, journals, etc....

#### Overall

- 1- What are the best services offered in GAU in your opinion?
- 2- What is the main problem in GAU?
- 3- What is the main reason you have chosen GAU?

	<b>Strongly Disagree/ Kesinlikle katılmıyoru m</b>	<b>Disagree / Katılmıyoru m</b>	<b>Agree/ Katılıyoru m</b>	<b>Strongly Agree/ Kesinlikle Katılıyoru m</b>
--	--	---------------------------------	----------------------------	--

	Education	Transportation	Dormitories	Other Facilities
<b>Tuition fees are reasonable.</b> <i>Öğrenim ücretleri makuldur.</i>				
<b>The quality of teaching is satisfactory.</b> <i>Öğretim kalitesi tatmin edicidir.</i>				
<b>Laboratories, computers, and other equipment are appropriate for a good quality of teaching.</b> <i>Laboratuvarlar, bilgisayarlar ve diğer ekipmanlar kaliteli bir eğitim için uygundur.</i>				
<b>Healthcare services in the campus healthcare centers are satisfactory.</b> <i>Kampüsteki sağlık merkezinin servisleri yeterlidir.</i>				
<b>Internet connection is available around the whole campus.</b> <i>İnternet kampüs genelinde mevcuttur.</i>				
<b>Library resources such as books and journals are sufficient.</b> <i>Kütüphanede yeterli sayıda kitap, dergi ve benzeri kaynaklar bulunmaktadır.</i>				
<b>The frequency of the shuttle service (buses) is sufficient.</b> <i>Otobüs servislerinin yoğunluğu yeterlidir</i>				
<b>The coverage area of the shuttle service routes is sufficient.</b> <i>Servis güzergahlarının kapsama alanları yeterlidir.</i>				
<b>School busses provide a comfortable travel.</b> <i>Okul otobüsleri konforlu bir seyahat sağlar.</i>				
<b>The prices of the dormitories are reasonable.</b> <i>Yurt fiyatları makuldur.</i>				
<b>Cleaning schedules are sufficient in dormitories.</b> <i>Yurt odalarının temizlik zamanları yeterlidir.</i>				
<b>Quality of food services in dormitories is appropriate.</b> <i>Yurtlardaki yemek kalitesi uygundur.</i>				

				(Sports, healthcare, Library etc..)
<b>What are the best services offered in GAU?</b> <i>GAÜ'de sunulan en iyi servis hangisidir?</i>				
<b>Which service of the GAU is the main problem (weakest)?</b> <i>GAÜ'nün en zayıf servisi hangisidir?</i>				
<b>What is the main reason you have chosen GAU?</b> <i>GAÜ'yü seçmenizin temel sebebi hangi servisidir?</i>				

	Strongly Disagree/ <i>Kesinlikle katılmıyorum</i>	Disagree / <i>Katılmıyorum</i>	Agree/ <i>Katılıyorum</i>	Strongly Agree/ <i>Kesinlikle Katılıyorum</i>
<b>Tuition fees are reasonable.</b> <i>Öğrenim ücretleri makuldür.</i>				
<b>General quality of teaching is good.</b> <i>Genel öğretim kalitesi iyidir.</i>				
<b>Laboratories, computers, and other equipment are appropriate for a good quality of teaching.</b> <i>Laboratuvarlar, bilgisayarlar ve diğer ekipmanlar kaliteli bir eğitim için uygundur.</i>				
<b>Content of courses in my department are valuable and up to date.</b> <i>Bölümümdeki derslerin içeriklerifaydalı ve günceldir.</i>				
<b>Internet connection is available around the whole campus.</b> <i>İnternet kampüs genelinde mevcuttur.</i>				
<b>Library resources such as books and journals are sufficient.</b> <i>Kütüphanede yeterli sayıda kitap, dergi ve benzeri kaynaklar bulunmaktadır.</i>				
<b>My instructors are accessible during their office hours.</b> <i>Öğretmenlerim ofis saatlerinde ulaşılabilir.</i>				
<b>Attitudes of my instructors are friendly and helpful towards me.</b> <i>Öğretmenlerimin bana arkadaşça ve yardımsever bir şekilde davranıyor.</i>				
<b>My academic advisor can provide good guidance for me.</b> <i>Akademik danışmanım bana iyi yardımcı olabiliyor.</i>				

<b>My education program includes adequate courses for the area of study.</b> <i>Öğretim programım çalışma alanı için uygun dersleri içermektedir.</i>				
<b>Teaching methods aim to improve analytical thinking abilities.</b> <i>Öğretim metodları analitik düşünme yeteneğini geliştirmeyi hedefliyor.</i>				
	<b>Strongly Disagree/ Kesinlikle katılmıyorum</b>	<b>Disagree / Katılmıyorum</b>	<b>Agree/ Katılıyorum</b>	<b>Strongly Agree/ Kesinlikle Katılıyorum</b>
<b>Assignments and projects are utilizing the skills that I have obtained during my education.</b> <i>Ödevler ve projeler öğrenim sırasında kazanılan becerileri kullanmaya yöneliktir.</i>				
<b>Lecture notes, books, and other teaching material are appropriate and up to date.</b> <i>Ders notları, kitaplar ve diğer öğrenim materyalleri uygun ve günceldir.</i>				
<b>Education in my department is preparing me for the career I desire.</b> <i>Bölümümdeki öğrenim beni hedeflediğim kariyere hazırlamaktadır.</i>				
<b>I am satisfied with the general facilities of my university such as sports, security, transportation, and food services.</b> <i>Üniversitenin bana sunduğu spor, güvenlik, ulaşım ve yemek servislerinden memnunum.</i>				